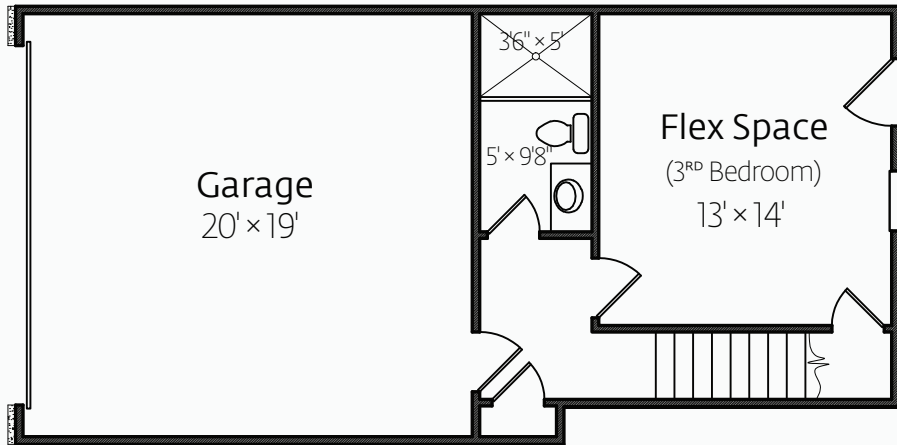


Unit 1 · 1918 sq. ft.

Floorplan Code A
Exhibit A



Garage Level



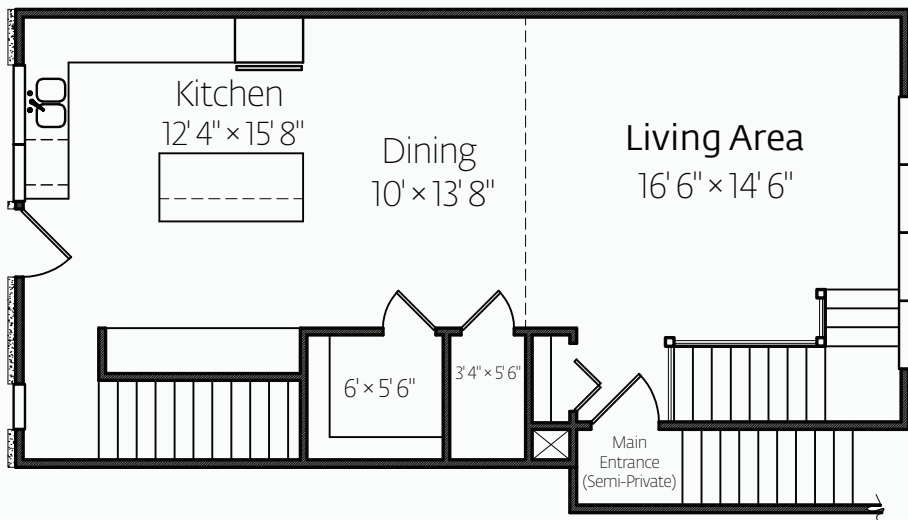
Markea Court

676 East Markea Avenue
Salt Lake City, Utah
84102

Showroom

Downtown Real Estate Gallery
350 South 200 East, #106
Salt Lake City, Utah
801.257.0777

Main Level



Hours & Tours: By Appointment

For pricing, amenities and more information on Markea Court Townhomes please visit our web site:

www.markeacourt.com

or contact:

Andrew Pratt

andrew@dregslc.com
801.257.0777 (phone)
801.257.0097 (fax)

Floor plan drawings and dimension are approximate. Buyer to verify.

Second Level

